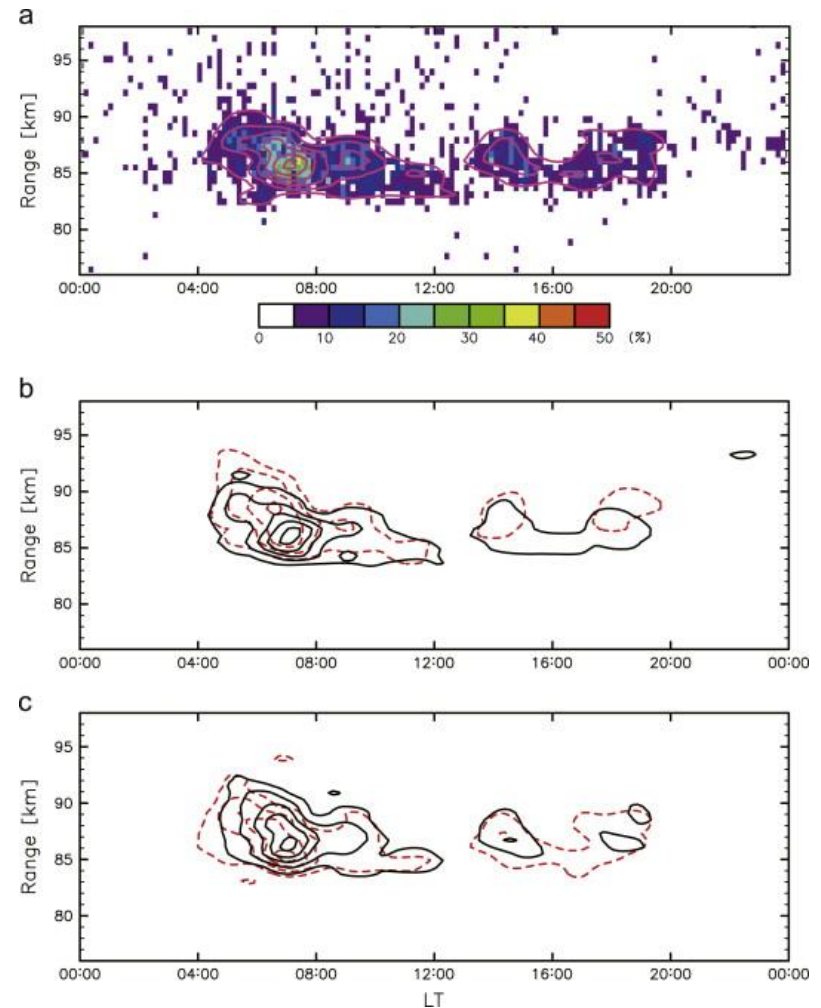




PMSE observed by the PANSY radar

- The PANSY radar performed PMSE (Polar Mesosphere Summer Echo) observations in January-February 2012 with 1/55 of a full array system (i.e., 19 antennas).
- PMSE occurrence is maximized at about 85 km height around 07:00LT and 14:00-18:00LT. The occurrence frequency is higher for the peak at 07:00 LT (Fig. a).
- PMSE occurrence frequency and height depends on the beam direction (Figs. b, c), which suggests that PMSE layers tilted on average.

(Sato et al., J. Atmos. Solar-Terr. Phys., 118A, 2-15, 2014.)



Occurrence frequency distributions of PMSE as a function of height and local time at (a) vertical, (b) north (solid)-south (dashed), and (c) east (solid)-westward (dashed) oblique beams. Contours are every 4% from 6%.